

Seminole Voice

November 19, 2010

Family *Calendar*

The Entitle Direct College Tips Scholarship Contest will run until Dec. 7. Entitle Direct Group will award one winner its “signature” reduction of 35 percent off a semester’s tuition. The company encourages college students and high-school seniors to submit their best tip — up to 100 words — for navigating the college admissions process. To view contest rules or enter, visit www.entitledirect.com/CollegeTips.

Family Calendar

More than 20 volunteers from Foresters, the city of Winter Park, Winter Park Pop Warner, organizers from KaBOOM! and residents of the local community will join forces to build a new, safe playground at Cady Way Park from 8:30 a.m. to 3 p.m. Saturday, Nov. 20. Visit cityofwinterpark.org for more information.

The Orlando Science Center wants to put your little ones into the Thanksgiving mood at the Preschool Holiday Workshop from 10 a.m. to noon, Saturday, Nov. 20. During the workshop, guests will explore the traditions and origins of Thanksgiving and cook up a little fun in the process. Activities include story time, exhibit exploration and seasonal snack time. For more information, visit www.osc.org or call 407-514-2112.

The Jewish Federation is presenting an Israeli Film Night at 8 p.m. Saturday, Nov. 20 at the Orlando Science Center, 777 E. Princeton St. with the featured film "A Matter of Time", a hilarious heart-warming Israeli comedy about four overweight guys who learn to love themselves through the Japanese sport of Sumo wrestling. Tickets are \$10 per person. To register, visit www.jfgo.org

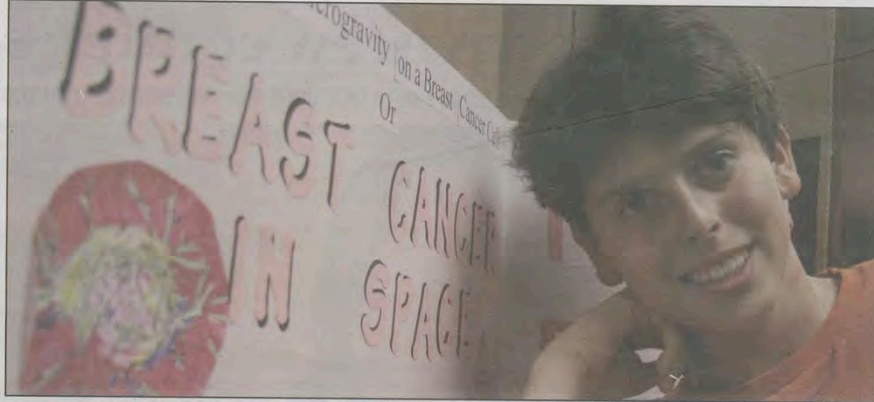
From now until Tuesday, Nov. 30, Sprite is giving community members the chance to help their local schools win one of two \$25,000 playground makeover or one of 10 runner-up prizes of \$5,000 that can be used toward athletic equipment. The community can donate points to their schools by entering the code found on any of their 13 favorite Coca-Cola products at www.mycokerewards.com

The Entitled Direct College Tips Scholarship Contest has officially started and runs through Tuesday, Dec. 7. The Company is encouraging college students and high-school seniors (must be at least 17 years old) to submit their best tip — up to 100 words — for navigating the college admissions process. To view the full contest rules and/or for students to enter, visit www.entitleddirect.com/CollegeTips

Children's programming continues in the Maitland Public Library, 501 S. Maitland Ave. Call 407-647-7700 for information. Storytimes include:
 -Toddler/preschooler time every Monday at 6 p.m. and Tuesday at 10:30 a.m.
 -Baby time every Thursday at 10:30 a.m.
 -Reading Buddies every Thursday at 4 p.m.
 -A puppet show for all ages will be held at 6 p.m. Monday, Nov. 22.
 -Books to Die For Mystery Book Club will discuss this month's book "What Are You Wearing to Die?" by Patricia Sprinkle at 7:30 p.m. Tuesday, Nov. 23.

Space studies

Maitland Middle science students may soon become part of NASA history



Baron Hahn, an eighth-grader at Maitland Middle, stands with his group's proposal on the affects of microgravity on breast cancer cells. PHOTO BY KATIE DEES — THE OBSERVER

KATIE DEES
OBSERVER STAFF

What happens when you mix microgravity with rainbow trout eggs or alfalfa sprouts?

These are just two of the science experiments from Maitland Middle School students that are being considered for a coveted spot aboard the last flight of the Space Shuttle Endeavour, scheduled for February. Winners will be selected Nov. 22-25.

An anonymous donor paid the \$15,000 fee so that the school can participate in The Student Spaceflight Experiments Program.

At Maitland Middle School's Jupiter Jubilee open house on Nov. 4, three semi-finalists were chosen to compete with Glenridge Middle School's semi-finalists. The prize — the opportunity to be a part of NASA history.

"You never know what's going to turn a kid on to science, but this gives them the experience of working on a real-life project and working with real scientists," said Lynn Mederos, eighth grade science teacher at Maitland Middle School.

"My kids have lit up like firecrackers over this."

Breast cancer cells

Students were asked to propose an experiment that would explore the effects of microgravity during a 10-day period on small amounts of fluid in either one test tube or in two test tubes, which

would be combined by astronauts soon after launch. The same experiments will occur on Earth.

The team, made up of Sam Bogle, Baron Hahn and eight other eighth grade classmates, is a semi-finalist. They hope to research the effects of microgravity on breast cancer cells.

Bogle, the team leader, said they chose breast cancer because "it's touched many of their lives."

"We chose this because we wanted to focus on something that could save someone's life someday," Hahn said.

They want to investigate whether breast cancer cells spread less quickly in zero gravity.

"... Maybe one day patients can be sent up into zero gravity for better treatment," Hahn said.

Microencapsulation

Another semi-finalist from Maitland Middle is the one-girl team of eighth-grader Jamie Fox. She researched her proposal all on her own, focusing on the affects of microgravity on the encapsulation of cisplatin — a platinum-based chemotherapy drug used to treat various types of cancers.

On the list of possible experiments, microencapsulation immediately caught her eye.

"...I'm really interested in cancer and finding healthier treatments for cancer," she said.

Fox's experiment will observe the microencapsu-

lation of the chemotherapy drug cisplatin with ~~gravity~~ ^{gravity} ~~out~~ ⁱⁿ, a common delivery vehicle for cancer treatment.

The program

The Student Spaceflight Experiments Program is a national Science, Technology, Engineering, and Mathematics (STEM) education initiative that provides middle and high school classes the ability to propose experiments to fly in low Earth orbit and is a program of the National Center of Earth and Space Science Education (NCSSE).

Lynn Mederos thinks the big picture of this project is the most important — getting kids interested in science.

"For a 14-year-old eighth-grader to want to come in during other classes and even stay after school to work on this is incredible," Mederos said.

Mederos said the step-by-step research projects have been a great experience for the students.

"When that shuttle goes off in February, a little piece of their hearts will go with it too."



ESTATE TAXES

After 2010, without any further action by Congress, the maximum estate tax rate becomes 55%!

Charles H. Stark, P.A.
ATTORNEY AT LAW

312 N. Park Ave., Suite 2-A
Winter Park, FL 32789
407.788.0250

Areas of practice:
 • WILLS, TRUSTS
 • ESTATE TAX REDUCTION
 • ASSET PROTECTION
 • CORPORATE LAW
 • PROBATE

SCHEDULE A FREE INITIAL CONSULTATION

What's YOUR HOME Worth?

Quick Over-the-Net Valuation!

Go to:
FreeHomeValueCFL.com

or call 407-927-5120
 Doug & Angela Clemens / Watson Realty Corp.